



Department of Planning
and Environment

Issued under the Environmental Planning and Assessment Act 1979

Approved Section 4.56 Modification Application

No MOD 22/8121 (DA 10064 MOD 2)

Granted on the 23 December 2022

In respect to DA 10064

Signed M Brown

Sheet No 62 of 68

CANDLELIGHT LODGE
32 DIGGINGS TERRACE
(ACCOMODATION)

SASHAS
APARTMENTS
(ACCOMODATION)
28 DIGGINGS TERRACE

LANDSCAPE MATERIALS

CODE DESCRIPTION

ENTRY
ES ENTRY SIGN

MULCH TYPES OVER NEW PLANTING AREAS

WCM WOOD CHIP MULCH 75-100MM DEPTH
RSM RIVER STONE MULCH 75MM DEPTH

PAVING

CGP COMPACTED GRAVEL PAVING - POROUS
EACP(H) EXPOSED AGGREGATE CONCRETE PAVING
HEATED AS PER SPECIFICATION

RFP RANDOM FLAGSTONE PAVING - LOCALLY
SOURCED GRANITE SAW-CUT W/NON-SLIP
SURFACE FINISH

RFP(H) RANDOM FLAGSTONE PAVING - TYPE 1
WITH MORTAR | HEATED AS PER
SPECIFICATION

RFP TYPE 2 RANDOM FLAGSTONE PAVING TYPE 2
LAYED ON CONSOLIDATED BASE WITH
SAND - POROUS JOINTS

RSA RIVER STONE ACCENTS WITHIN RFP -
LOCALLY SOURCED STONES FROM
APPROVED QUARRY

ROCKWORK

DSW DRY STONE WALL (IF REQUIRED)
FRB FEATURE ROCK BOULDER (IF REQUIRED)
HO HABITAT OPPORTUNITY | REFER DETAIL
RRW ROCK RETAINING WALL | REFER DETAIL (IF REQUIRED)

LIGHTING

LFL LANDSCAPE FEATURE LIGHTING

FENCE BARRIERS

EPB EXISTING PROPERTY BOUNDARY
TF TEMPORARY FENCING | REFER DETAIL

STORM WATER + IRRIGATION

RG-OVER ROOF GARDEN OVER DIGGINGS TERRACE
ENTRY | REFER DETAIL (IF REQUIRED)
RSOS RIVER STONE OPEN SWALE | REFER DETAIL
TOG TOP OF GRATE | REFER DETAIL

AMEND FOR
CLARIFICATION

AMEND FOR S4.56 MODIFICATION

ANN-MAREE O'BRIEN
LANDSCAPE ARCHITECT

ABN: 50824887736
TOWNHOUSE 1, 3 PILOT CLOSE
JINDABYNE NSW 2627
0439 317 282

landscapearchitectjindabyne@gmail.com.au

DO NOT SCALE OFF DRAWINGS,
USE FIGURED DIMENSIONS.
VERIFY ALL DIMENSIONS ON SITE.
NOT TO BE USED OR COPIED WITHOUT PERMISSION.

COPYRIGHT 2020
ANN-MAREE O'BRIEN LANDSCAPE ARCHITECTURE

No.	Description	Date
1	80% ISSUE	2020_10_02
2	95% ISSUE	2020_10_09
3	LANDSCAPING - AMENDED DESIGN DOCUMENTATION	2020_10_15
4	AMENDED DRAWINGS FOR DA CONSENT	2021_06_11
5	AMENDED DRAWINGS FOR S4.56 MODIFICATION	2022_06_03
6	AMENDED DRAWINGS FOR HI-NOON OBJECTIONS	2022_08_04

HIDALI PTY LTD

LA DESIGN DEVELOPMENT - MATERIALS PLAN

BLACK BEAR DEVELOPMENT | 30 Diggings Tce Thredbo NSW 2625

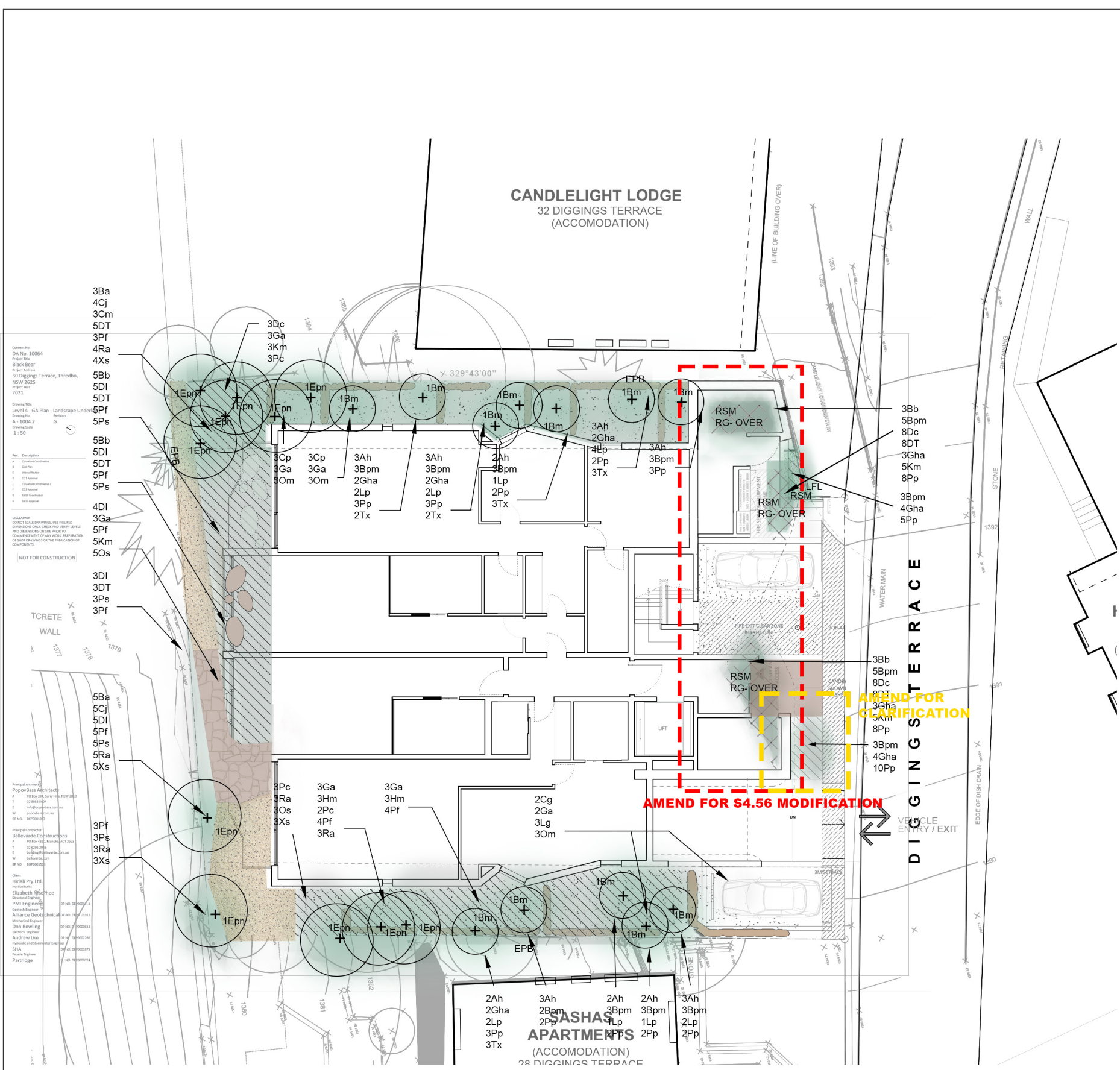
LA DD 002

PROJECT NO: LA 1901

Checked by AM OBRIEN Drawn by AM OBRIEN

Scale 1 : 200

14/10/2020 6:26:28 PM



PLANTING PLAN LEGEND

CODE



DESCRIPTION

SEMI ADVANCED TREE &/OR LARGE SHRUB

REFER DETAILS FOR PLANTING PLAN SCHEDULE & PLANT LIST



Department of Planning and Environment

Issued under the Environmental Planning and Assessment Act 1979

Approved Section 4.56 Modification Application

No MOD 22/8121 (DA 10064 MOD 2)

Granted on the 23 December 2022

In respect to DA 10064

Signed M Brown

Sheet No 63 of 68

Contract No. DA No. 10064
Project Title
Black Bear
30 Diggings Terrace, Thredbo,
NSW 2625
Project Ref
2021

Drawing Title
Level 4 - GA Plan - Landscape Under
Drawing No.
A - 1004.2
Drawing Date
1:50

Rev. Description
1. Revision
2. Revision
3. Revision
4. Revision
5. Revision
6. Revision
7. Revision
8. Revision
9. Revision
10. Revision

DISCLAIMER
DO NOT SCALE DRAWINGS. USE FIGURED
DIMENSIONS ONLY. CHECK AND VERIFY ALL
DIMENSIONS ON SITE. THE DRAWING IS FOR
CONSIDERATION OF ANY WORK, PREPARATION
OR CONSTRUCTION OF THE PROPOSED
COMPONENTS.

NOT FOR CONSTRUCTION

TO CONCRETE
WALL
1371
1378
1379

Principal Architect
PopovBass Architects
PO Box 455, Sydney, NSW 2050
T 02 955 5434
F 02 955 5434
E info@popovbass.com.au
W www.popovbass.com.au
DP No. 0000000000

Principal Contractor
BalfourBeatty Construction
PO Box 455, Sydney, NSW 2050
T 02 955 5434
F 02 955 5434
E info@balfourbeatty.com.au
W www.balfourbeatty.com.au
DP No. 0000000000

Client
Hidali Pty Ltd
Represented by
Elizabeth O'Brien
Principal Engineer
PMI Engineering
Alliance Geotechnical
Don Rowling
Principal Engineer
Andrew Lally
Principal Engineer
SAS
Principal Engineer
Partridge

ANN-MAREE O'BRIEN

LANDSCAPE ARCHITECT

ABN: 50824887736

TOWNHOUSE 1, 3 PILOT CLOSE

JINDABYNE NSW 2627

0439 317 282

landscapearchitectjindabyne@gmail.com.au

DO NOT SCALE OFF DRAWINGS.

USE FIGURED DIMENSIONS.

VERIFY ALL DIMENSIONS ON SITE.

NOT TO BE USED OR COPIED WITHOUT PERMISSION.

COPYRIGHT 2020

ANN-MAREE O'BRIEN LANDSCAPE ARCHITECTURE

No.	Description	Date
1	80% ISSUE	2020_10_02
2	95% ISSUE	2020_10_09
3	LANDSCAPING - AMENDED DESIGN DOCUMENTATION	2020_10_15
4	AMENDED DRAWINGS FOR DA CONSENT	2021_06_11
5	AMENDED DRAWINGS FOR S4.56 MODIFICATION	2022_06_03
6	AMENDED DRAWINGS FOR HI-NOON OBJECTIONS	2022_08_04

HIDALI PTY LTD

LA DESIGN DEVELOPMENT - MATERIALS PLAN

BLACK BEAR DEVELOPMENT | 30 Diggings Tce Thredbo NSW 2625

LA DD 004

PROJECT NO: LA 1901

Scale 1 : 200

Checked by AM OBRIEN


Drawn by AM OBRIEN

Recommended Endemic Plant Species List for Plant Selection in Proposed Landscape Design							
List supplied by Elizabeth McPhee BAS (Hort.) MAS (Hort.) Alpine Horticultural Specialist							
CODE	PLANT GENUS/SPECIES NAME	COMMON NAME	PLANT TYPE	MATURE HEIGHT	MATURE WIDTH	QTY.	NOTES - characteristics and areas
T - TREES							
Epn	Eucalyptus pauciflora subsp.niphophila	Alpine Snow Gum	Endemic Tree	5.0M	3.0M	11	MS/DT/DR/FS/UES. SemiAdvanced Specimens with staking. Area: North/West Elevations
TS - TALL SHRUBS @ 1.5M centres							
Bm	Banksia marginata	Silver Banksia	Endemic Large Shrub	5.0M	4.0M	12	Specimens with staking. Area: North/East/South Elevations
Lg	Leptospermum grandifolium	Mountain Tea-Tree	Endemic Large Shrub	3.0M	2.0M	3	PST/Good hedging shrub - mass planting
Om	Oleria megalophylla	Large-Leaved Daisy Bush	Endemic Large Shrub	0.6M	0.5M	9	PST/Good understorey shrub
MS - MEDIUM SHRUBS @ 1.2M centres							
Cp	Callistemon pityoides	Alpine Bottlebrush	Endemic Shrub	1.0M	0.8M	6	Hardy shrub - does not seem to get grazed DR
Ga	Grevillea australis	Alpine Grevillea	Endemic Shrub	0.6M	0.4M	20	DT/Very hardy shrub
Hm	Hakea microcarpa	Small fruited Hakea	Endemic Shrub	1.5M	1M	6	DT/Hardy shrub - bit spikey
Lp	Leionema phyllicifolium	Mountain Phebalium	Endemic Shrub	1.0M	3.0M	15	Slow growing wide spreading shrub, tolerates shade
Os	Ozothamnus secundiflorus	Cascade Everlasting	Endemic Shrub	1.5M	1.5M	8	Good contrast shrub due to grey foliage
Pc	Prostranthera cuneata	Alpine Mint Bush	Endemic Shrub	0.8M	0.8M	8	FS/PST/UES/WDS/FH
Tx	Tasmannia xerophila	Alpine Pepper-bush	Endemic Shrub	1.2M	0.6M	13	Good contrast shrub due to red stems - copes with shade
LS - LOW SHRUBS @ 1.2M centres							
Ah	Acrothamnus hookeri	Mountan Beard-heath	Endemic Shrub	0.5M	0.5M	26	PST/Slow growing, shade tolerant
Cg	Correa lawrenceana	Tree Correa	Endemic Shrub	1.5M	1.5M	2	FS/FH - Showy glossy leaved shrub
Km	Kunzea muelleri	Yellow Kunzea	Endemic Shrub	0.6M	1.2M	18	PST/Hardy understorey shrub
GC - GROUND COVERS, PERENIALS & HERBS @ 700mm centres							
Ba	Brachyscome aculeata	Hill Daisy	Ground Cover	0.1M	0.1M	8	Attractive low daisy
Bb	Bulbine bulosa	Chocolate Lily	Herbaceous perennial	0.3M	0.1M	5	Disappears over winter - showy in the summer
Cj	Craspedia jamesii	James' Billy Button	Endemic Forb	0.1M	0.2M	9	Hardy forb but very palatable
Gha	Goodenia hederacea subsp. alpestris	Ivy Goodenia	Ground Cover	0.1M	0.5M	18	Shade tolerant ground cover - hard to get
Ra	Rhodanthe anthemoides	Chamomile Sunray	Endemic Forb	0.2M	0.2M	18	Showy paper daisy
Xs	Xerochrysum subundulatum	Alpine Everlasting	Endemic Forb	0.2m	0.1M	15	Showy paper daisy

F - FERNS @ 300mm centres to 500mm centres							
Bpm	Blechnum penna-marina	Alpine Water Fern	Ground Cover - Delicate Fern	0.25M	1.0M	49	RWR/FH/ST/MS Use in Roof Garden Area - Irrigated and Drained Has to be in the shade
Pp	Polystichum proliferum	Mother Shield Fern	Ground Cover - Medium Fern	0.5M	0.5M	55	RWR/FH/ST/MS Use in Roof Garden Area - Irrigated and Drained - tolearates shade and filtered sun
G- GRASSES @ 600mm centres							
Pf	Poa fawcettiae	Endemic tussock grass	Endemic Grass	0.3M	0.5M	37	Full Sun /Partial Shade
Ps	Poa sieberiana	Endemic tussock grass	Endemic Grass	0.3M	0.5M	21	FS/Full Sun
TF - TUFTS, FLAX & REEDS @ 600mm centres							
Bb	Bulbine bulbosa	Chocolate Lily	Herbaceous perennial	0.3M	0.1M	11	Disappears over winter - showy in the summer
Dc	Dianella caerulea	Blue Flax Lily	Small Flowering Tussock	0.75M	1.5M	19	Moist Soil / Partial Shade
DI	Dianella longifolia	Blueberry Lily	Flowering Tussock	1.2M	0.5M	22	Full Sun
DT	Dianella tasmanica	Alpine Lily	Flowering Tussock	1.0M	0.5M	34	Partial Shade - good mass planted
GC - GROUND COVERS, PERENIALS & HERBS @ 500mm centres							
Cm	Craspedia maxgrayi	Wooly Heads	Endemic Forb	0.1M	0.2M	3	FS/Grey foliage - showy flower
Plants Nominated: All plants nominated are appropriate for the extremities of Alpine Enviroment - i.e: Frost, Wind, Drought. Micro-climate details such as drainage, full sun and shade as noted. Plant Sizes: ALL DERIVED FROM ENDEMIC PLANT STOCK. Tubestock and 150mm pot sizes; sourced from Local Nurseries - e.g: Monaro Native Tree Nursery ; Trees may be Semi Mature at time of planting. Staking of all trees required for wind protection. Final Plant List: Refer Planting Plan for Selected Plants and Quantities							

PLANT LIST KEY:	
DR	Deer Resistant
DT	Drought Tolerant
FH	Frost Hardy
FS	Full Sun
FT	Frost Tolerant/Sensitive
MS	Moist Soil
NDT	Not Drought Tolerant
PST	Partial Shade Tolerant
RWR	Requires Water Regularly
ST	Shade Tolerant
UES	Use Endemic Stock
WDS	Well Drained Soils

NOTE:
ALL STRAW BALES USED MUST BE CERTIFIED AS WEED FREE



Department of Planning and Environment

Issued under the *Environmental Planning and Assessment Act 1979*

Approved Section 4.56 Modification Application


NoMOD 22/8121 (DA 10064 MOD 2)

Granted on the23 December 2022

In respect toDA 10064

SignedM Brown

Sheet No64 of 68



ANN-MAREE O'BRIEN
LANDSCAPE ARCHITECT

ABN: 50824887736
TOWNHOUSE 1, 3 PILOT CLOSE
JINDABYNE NSW 2627
0439 317 282
landscapearchitectjindabyne@gmail.com.au

DO NOT SCALE OFF DRAWINGS,
USE FIGURED DIMENSIONS.
VERIFY ALL DIMNENSIONS ON SITE.
NOT TO BE USED OR COPIED WITHOUT PERMISSION.

COPYRIGHT 2020
ANN-MAREE O'BRIEN LANDSCAPE ARCHITECTURE

No.	Description	Date
1	80% ISSUE	2020_10_02
2	95% ISSUE	2020_10_09
3	LANDSCAPING - AMENDED DESIGN DOCUMENTATION	2020_10_15
4	AMENDED DRAWINGS FOR DA CONSENT	2021_06_11
5	AMENDED DRAWINGS FOR S4.56 MODIFICATION	2022_06_03
6	AMENDED DRAWINGS FOR HI-NOON OBJECTIONS	2022_08_04

HIDALI PTY LTD

PLANTING PLAN SCHEDULE

BLACK BEAR DEVELOPMENT | 30 Diggings Tce Thredbo NSW 2625

LA DD 007.01

PROJECT NO:LA 1901

Scale

Checked byAM OBRIENDrawn byAM OBRIEN